



POWERIDER



Factory



About our company:

Juxing Power Supply was established in 1992 and currently it has become one of leading valve regulated lead acid battery manufacturers in China with years' brilliant background and experience.

Our manufacturing plant occupies around 40,000 square meters with more than 600 experienced employees, and it is well equipped with modern and precise processing including battery plate facility, automatic assembly lines and advanced testing equipment. With an excellent QC team, we maintain a low defect rate which ensures us can supply qualified batteries to customers world widely. In combination with latest production technology, outstanding techniques, safe and reliable quality and credit worthiness, our batteries have been sold to over 50 countries and regions in North America, South America, Asia, Europe, Middle East, and North Africa.

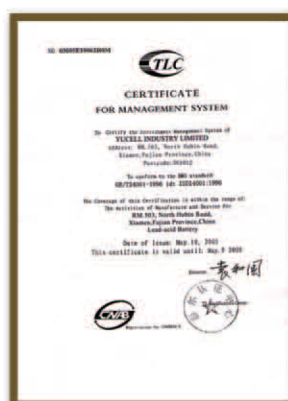
We bring you not only reliable batteries, but also excellent service. Being a well-established company in the field of VRLA battery industry for more than sixteen years, we feel confident that the reliability and longevity of our "POWERIDER" brand VRLA batteries will definitely make your purchase a sound investment.

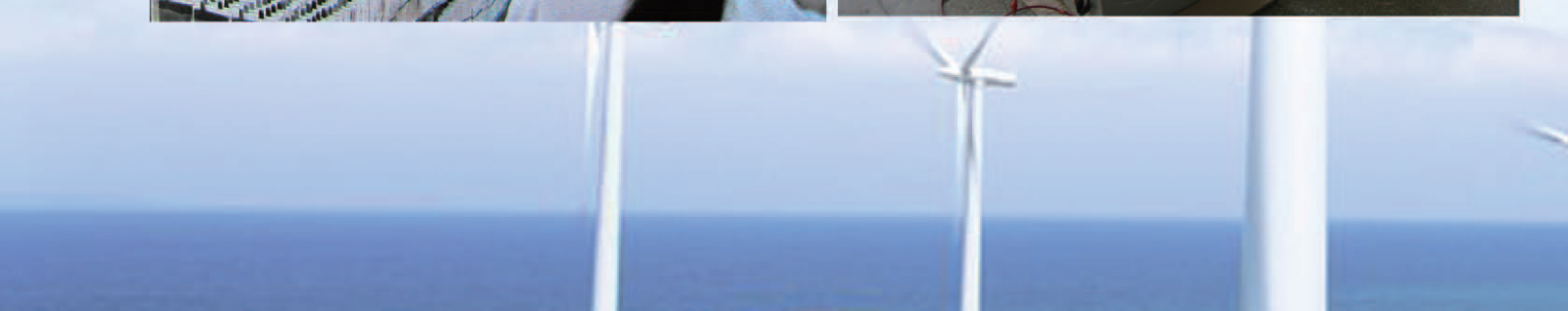
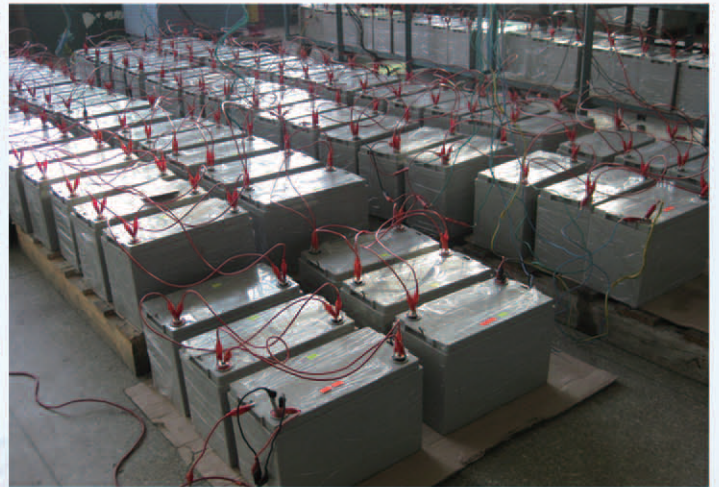
About our product:

Power Protection and Battery Specialists

We supply a full range of sealed lead acid batteries for general use and deep cycle application with full technical support backup, including 2V, 6V and 12V series. Both sealed type and gelled type are available. Applications include:

- uninterruptible power supply (UPS);
- telecommunications;
- electric power;
- security & emergency system;
- solar energy;
- electronic instruments;
- medical equipments;
- other applications.







PR SERIES – General Purpose VRLA Battery

Model No.	Voltage (V)	Capacity (Ah) 10 hrs rate	Capacity (Ah) 20 hrs rate	Appx.Dimension (mm)				Approx. Weight (Kg)	Q'ty/CTN	Terminal	CTN MEAS (CM)		
				L (±1)	W(±1)	H (±2)	TH(±2)				L	W	H
PR1.3-6	6		1.3	97	24	51	57	0.30	20	F1	25	20.5	7.8
PR2.8-6	6		2.8	66	33	97	103	0.55	20	F1	27.5	17.5	12.5
PR3.2-6	6		3.2	125	33	60	66	0.62	20	F1	33.9	26	87
PR4-6	6		4	70	48	100	106	0.70	20	F1	29.5	24.5	12.8
PR4.5-6	6		4.5	70	48	100	106	0.82	20	F1	29.5	24.5	12.8
PR5-6	6		5	170	35	70	76	0.90	16	F1	35	29	9.7
PR7-6	6		7	151	35	93	99	1.13	16	F1	31.2	29	12.2
PR10-6	6		10	151	51	94	100	1.75	10	F1	31	26	12
PR12-6	6		12	151	51	94	100	1.80	10	F1	31	26	12
PR0.8-12	12		0.8	96	25	62	62	0.35	20	P1	27.1	20.6	8.7
PR1.3-12	12		1.3	97	45	53	59	0.57	20	F1	39.6	23.6	7.8
PR2.2-12	12		2.2	178	35	61	67	0.96	20	F1	36	36.5	8.8
PR3.3-12	12		3.3	134	67	61	67	1.29	10	F1	34.5	27.8	8.8
PR4-12	12		4	90	70	102	108	1.40	10	F1	36	19	12.8
PR4.5-12	12		4.5	90	70	102	108	1.55	10	F1	36	19	12.8
PR5-12	12		5	90	70	102	108	1.65	10	F1	36	19	12.8
PR7-12	12		7	151	65	94	100	2.25	10	F1/F2	31.5	27	12.5
PR7.2-12	12		7.2	151	65	94	100	2.30	10	F1/F2	34	31	12.5
PR7.5-12	12		7.5	151	65	94	100	2.50	10	F1/F2	34	31	12.5
PR9-12	12		9	151	66	94	100	2.56	10	F2	34	31	12.5
PR10-12	12		10	151	98	95	100	3.50	4	F2	31.3	20.5	12.5
PR12-12	12		12	151	98	95	100	3.70	4	F2	31.3	20.5	12.5
PR17-12	12		17	181	77	167	167	5.35	4	F3/T1	31.5	19	20
PR20-12	12		20	181	77	167	167	5.70	4	F3/T1	31.5	19	20
PR24-12	12		24	175	165	125	125	8.10	2	F3	35.6	20.2	18
PR26-12	12		26	175	165	125	125	9.00	2	F3	35.6	20.2	18
PR33-12	12	33		196	132	157	180	10.30	2	F5/T3	29	22	22
PR38-12	12	38		196	166	176	184	13.40	2	F5/T3	35.5	22	23
PR40-12	12	40		196	166	176	184	13.50	2	F5/T3	35.5	22	23
PR55-12	12	55		229	138	208	228	17.10	1	F7/T4	25	16.3	27.5
PR65-12	12	65		350	166	175	175	22.0	1	F8/T7	36	20	22.5
PR75-12	12	75		260	169	208	227	23.1	1	F9/T5	28.4	19	27.6
PR80-12	12	80		260	169	208	227	27.5	1	F9/T5	28.4	19	27.6
PR90-12	12	90		307	169	208	228	28.5	1	F10/T6	33	19	28
PR100-12	12	100		333	172	216	221	31.3	1	F11/T7	37.5	21.5	28.2
PR120-12	12	120		407	174	233	238	35.5	1	F12/T6	45.5	20.5	29.5
PR150-12	12	150		483	170	241	241	43.0	1	F13/T7	51.2	19.2	29.4
PR200-12	12	200		522	240	220	245	62.6	1	F14/T8	54.2	26.2	29.2
PR100-6	6	100		195	171	207	212	15.2	2	T7	36.8	22	25
PR120-6	6	120		280	128	203	207	17.2	1	T7	30	15	24.3
PR150-6	6	150		260	180	247	254	25.0	1	T7	26	18	26
PR180-6	6	180		306	168	222	227	26.6	1	T7	33.2	19.1	27.3
PR200-6	6	200		323	178	224	248	30.0	1	F14	34.5	20	31

FRONT TERMINAL SERIES

Model No.	Voltage (V)	Capacity (Ah) 10 hrs rate	Appx.Dimension (mm)				Approx. Weight (Kg)	Q'ty/CTN	Terminal	CTN MEAS (CM)		
			L (±1)	W(±1)	H (±2)	TH(±2)				L	W	H
PF55-12	12	55	277	106	223	223	16.5	1	T7	30.1	13	28.2
PF75-12	12	75	563	115	188	188	24.8	1	B0	58.5	13.5	24
PF100-12	12	100	394	110	286	286	32.5	1	T7	39.5	11	29
PF105-12	12	105	507	110	223	238	31.3	1	T5	53	13.5	29
PF150-12	12	150	551	110	288	288	45.6	1	T7	57.5	12.7	36.5
PF180-12	12	180	561	125	317	325	49.5	1	T4	57	25.2	31.5

2V SERIES

Model No.	Voltage (V)	Capacity (Ah) 10 hrs rate	Appx.Dimension (mm)				Approx. Weight (Kg)	Q'ty/CTN	Terminal	CTN MEAS (CM)		
			L (±1)	W(±1)	H (±2)	TH(±2)				L	W	H
PT200	2	200	173	111	329	363	14.8	2	T7	25	19.5	43.5
PT300	2	300	171	151	330	366	20.7	1	T7	19.5	17.5	43.5
PT400	2	400	211	176	329	367	29.2	1	T7	23.5	19.5	43.5
PT500	2	500	241	172	331	366	33.9	1	T7	26.5	19.5	43.5
PT600	2	600	301	175	331	366	40.9	1	T7	33	20	43.5
PT800	2	800	410	177	330	365	57.3	1	T7	43.5	20	45
PT1000	2	1000	475	175	328	365	69.1	1	T7	51	20	44
PT1500	2	1500	401	351	342	378	108	1	T7	43	38	45
PT2000	2	2000	491	351	344	383	137	1	T7	52	38	45
PT3000	2	3000	712	353	341	382	210	1	T7	23.8	37.9	45.1



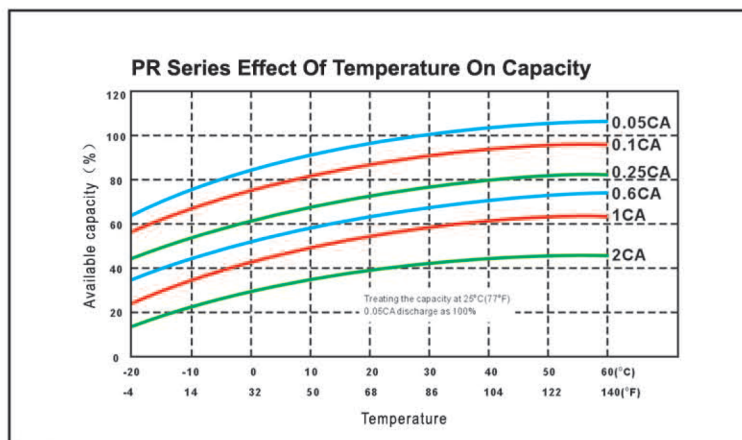
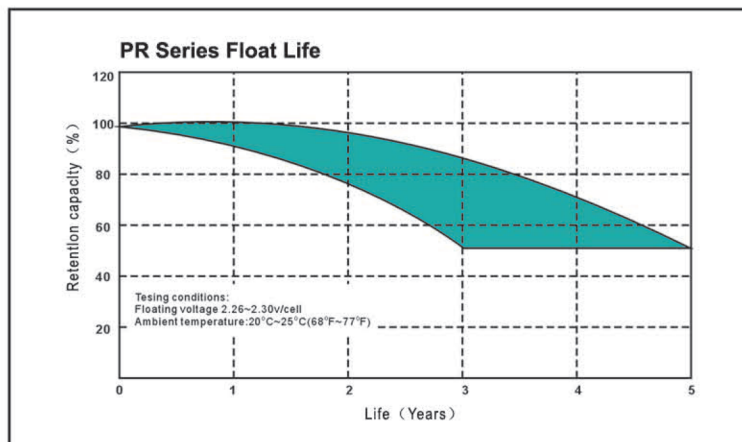
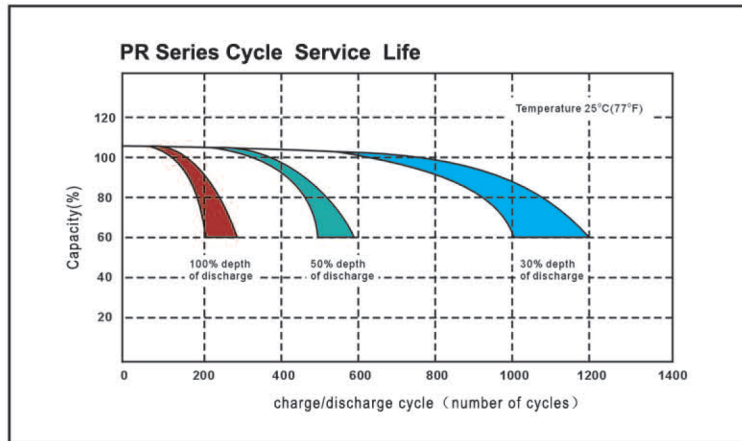
PD SERIES – Deep Cycle VRLA Battery

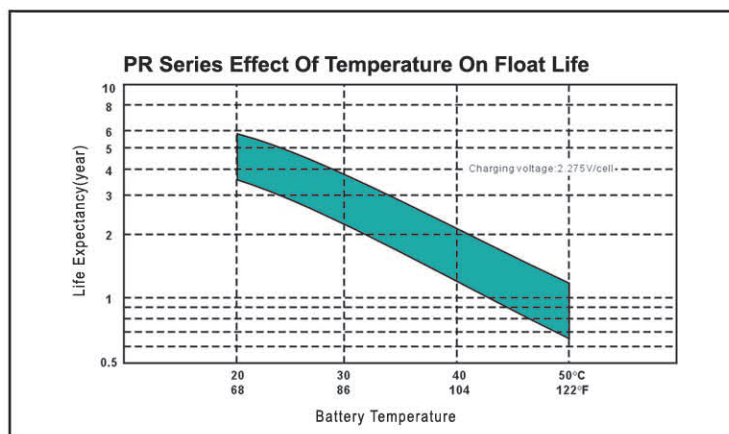
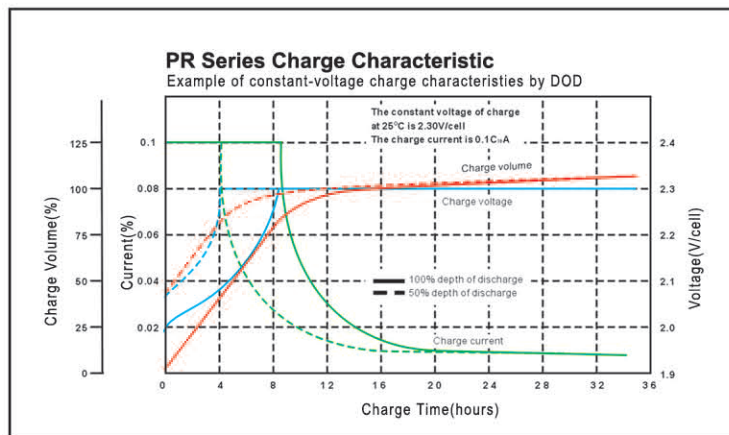
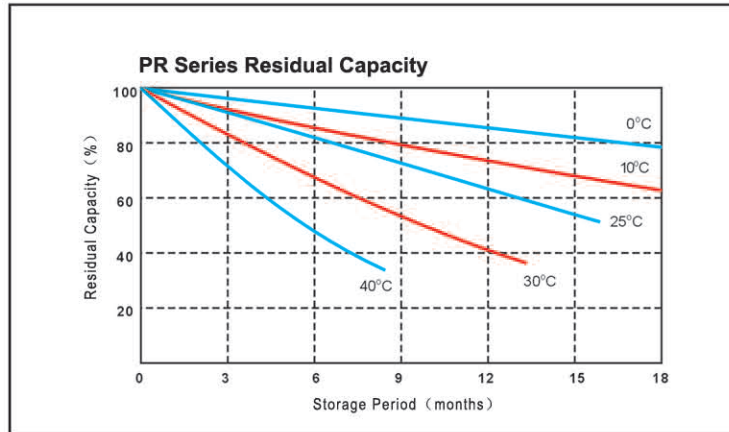
Model No	Voltage (V)	Capacity (Ah) 10 hrs rate	Capacity (Ah) 20 hrs rate	Appx.Dimension (mm)				Approx. Weight (Kg)	Q'ty/CTN	Terminal	CTN MEAS (CM)		
				L(±1)	W(±1)	H(±2)	TH(±2)				L	W	H
PD7-12	12		7	151	65	94	100	2.20	10	F1/F2	34	31	12.5
PD12-12	12		12	151	98	95	100	3.60	4	F2	31.3	20.5	12.5
PD20-12	12		20	181	77	167	167	5.46	4	F3/T1	31.5	19	20
PD26-12	12		26	175	165	125	125	8.10	2	F3	35.6	20.2	18
PD33-12	12	33		196	132	157	180	9.65	2	F5/T3	29	22	22
PD40-12	12	40		196	166	176	184	12.90	2	F5/T3	35.5	22	23
PD55-12	12	55		229	138	208	228	16.75	1	F7/T4	25	16.3	27.5
PD65-12	12	65		350	166	175	175	20.7	1	F8/T7	36	20	22.5
PD75-12	12	75		260	169	208	227	22.5	1	F9/T5	28.4	19	27.6
PD85-12	12	85		260	169	208	227	25.2	1	F9/T5	28.4	19	27.6
PD90-12	12	90		307	169	208	228	27.0	1	F10/T6	33	19	28
PD100-12	12	100		333	172	216	221	31.3	1	F11/T7	37.5	21.5	28.2
PD120-12	12	120		407	174	233	238	36.8	1	F12/T6	45.5	20.5	29.5
PD150-12	12	150		483	170	241	241	44.3	1	F13/T7	51.2	19.2	29.4
PD200-12	12	200		522	240	220	245	60.7	1	F14/T8	54.2	26.2	29.2
PD100-6	6	100		195	171	207	212	15.2	2	T7	36.8	22	25
PD120-6	6	120		280	128	203	207	17.2	1	T7	30	15	24.3
PD150-6	6	150		260	180	247	254	25.0	1	T7	26	18	26
PD180-6	6	180		306	168	222	227	26.6	1	T7	33.2	19.1	27.3
PD200-6	6	200		323	178	224	248	30.0	1	F13	44.5	20	31

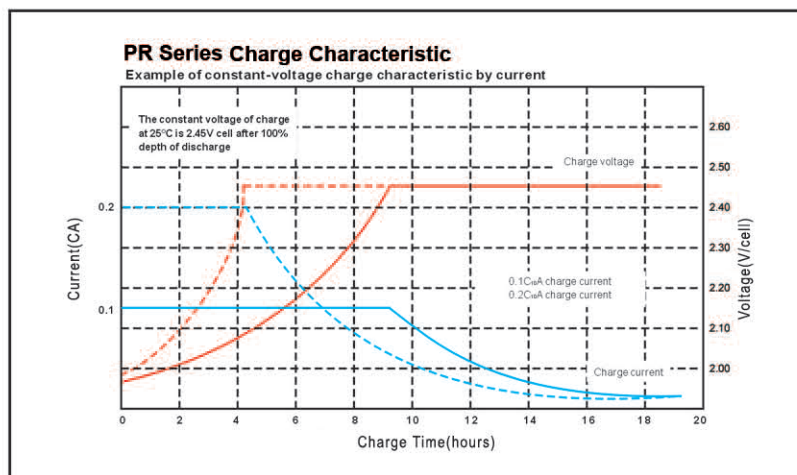
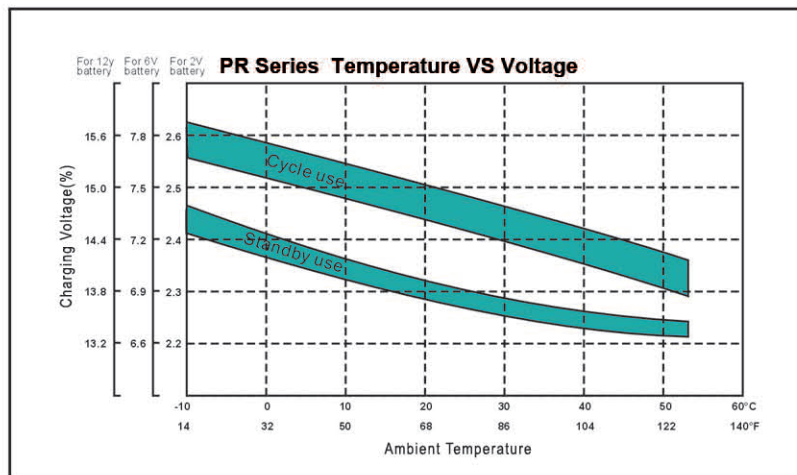
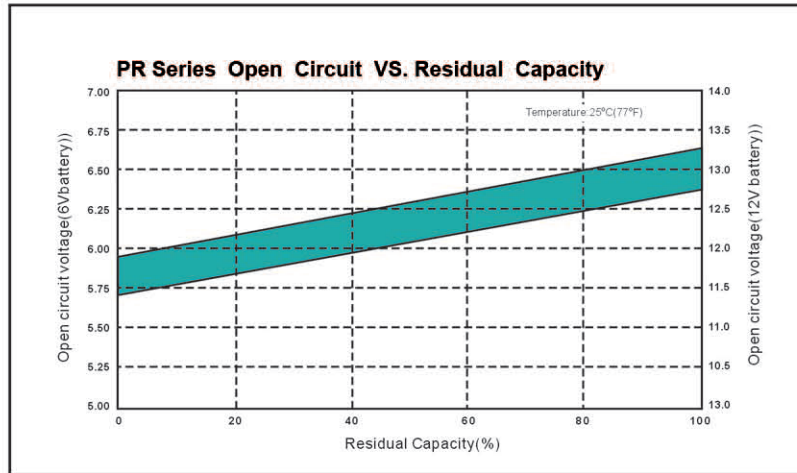
PG SERIES – Deep Cycle Gelled VRLA Battery

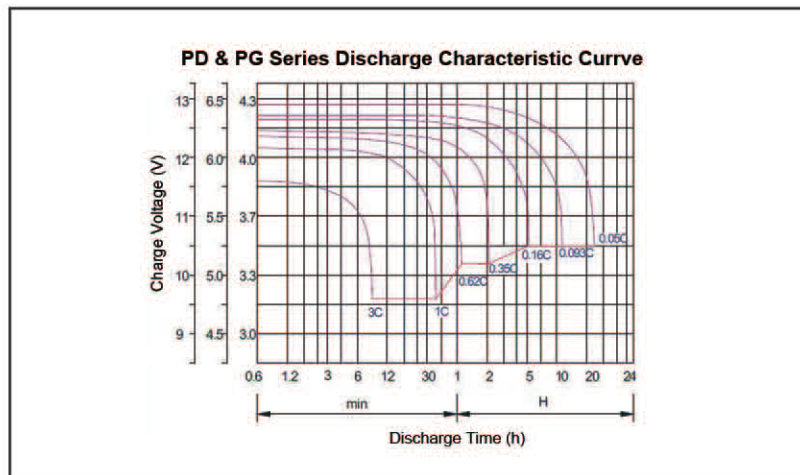
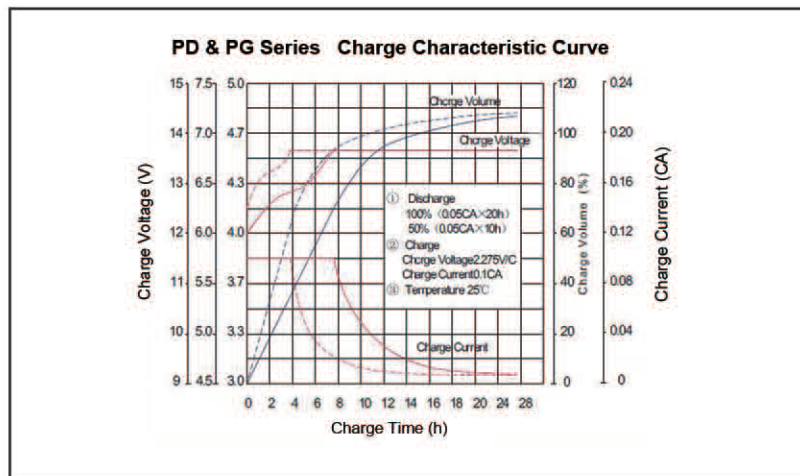
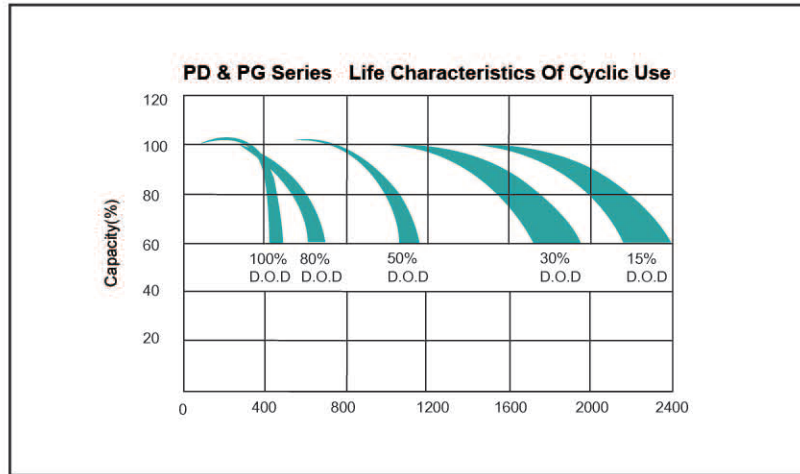
Model No	Voltage (V)	Capacity (Ah) 10 hrs rate	Capacity (Ah) 20 hrs rate	Appx.Dimension (mm)				Approx. Weight (Kg)	Q'ty/CTN	Terminal	CTN MEAS (CM)		
				L(±1)	W(±1)	H(±2)	TH(±2)				L	W	H
PG7-12	12		7	151	65	94	100	2.20	10	F1/F2	34	31	12.5
PG12-12	12		12	151	98	95	100	3.60	4	F2	31.3	20.5	12.5
PG20-12	12		20	181	77	167	167	5.46	4	F3/T1	31.5	19	20
PG26-12	12		26	175	165	125	125	8.10	2	F3	35.6	20.2	18
PG33-12	12	33		196	132	157	180	9.65	2	F5/T3	29	22	22
PG40-12	12	40		196	166	176	184	12.90	2	F5/T3	35.5	22	23
PG55-12	12	55		229	138	208	228	16.75	1	F7/T4	25	16.3	27.5
PG65-12	12	65		350	166	175	175	20.7	1	F8/T7	36	20	22.5
PG75-12	12	75		260	169	208	227	22.5	1	F9/T5	28.4	19	27.6
PG85-12	12	85		260	169	208	227	25.2	1	F9/T5	28.4	19	27.6
PG90-12	12	90		307	169	208	228	27.0	1	F10/T6	33	19	28
PG100-12	12	100		333	172	216	221	31.3	1	F11/T7	37.5	21.5	28.2
PG120-12	12	120		407	174	233	238	36.8	1	F12/T6	45.5	20.5	29.5
PG150-12	12	150		483	170	241	241	44.3	1	F13/T7	51.2	19.2	29.4
PG200-12	12	200		522	240	220	245	60.7	1	F14/T8	54.2	26.2	29.2
PG100-6	6	100		195	171	207	212	15.2	2	T7	36.8	22	25
PG120-6	6	120		280	128	203	207	17.2	1	T7	30	15	24.3
PG150-6	6	150		260	180	247	254	25.0	1	T7	26	18	26
PG180-6	6	180		306	168	222	227	26.6	1	T7	33.2	19.1	27.3
PG200-6	6	200		323	178	224	248	30.0	1	F14	34.5	20	31











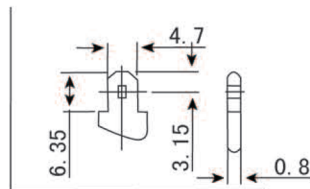
Terminal Type

Lead Terminal Dimension

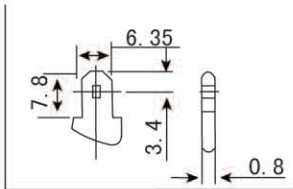
Item	Screw	A	B	C	D	E	Model
12V18	M5	10.5	5	13	5.5	5.5	F4
12V33	M6	16	6	17	6.5	8	F5
12V40	M6	15	6	18	6	8	F6
12V55	M8	14.5	8	19	8	10.5	F7
12V65	M6	17	6	21	7	10.5	F8
12V70	M8	18	8	23	11	12	F9
12V90	M8	18	8	24	13.5	11	F10
12V100	M8	25	9	24	7	1	F11
12V120	M8	26	8	23	8.5	1	F12
12V150	M8	26	8	19.5	8.5	9.5	F13
12V200	M8	27	9	26	8	12.5	F14
12V26	M6	16.5	6.5	17	8.5	8	F15
12V38	M6	16.5	6.5	17	8.5	8	F15

Copper Terminal Dimension

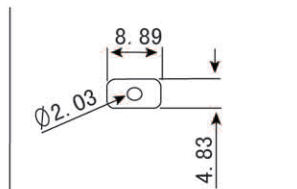
Item	∅	M	H	Model
12V18	11	5	3	T1
12V33	16	6	3	T2
12V40	17	6	3	T3
12V55	15	6	4	T4
12V75	16	6	4	T5
12V90	16	6	5	T6
12V100	20	8	5	T7
12V120	16	6	5	T6
12V150	16	6	5	T6
12V200	18	6	5	T8
2V	20	8	5	T7



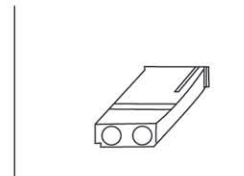
Terminal F1 (187)



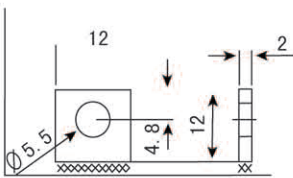
Terminal F2(250)



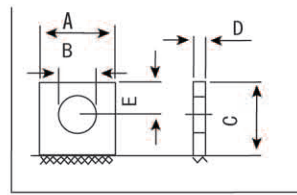
Terminal C1



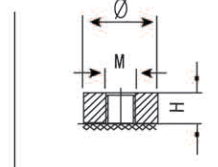
Terminal P1



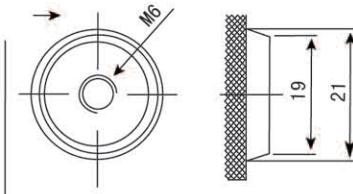
Terminal F3



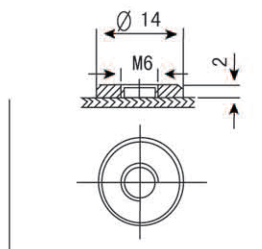
Terminal F4-F15



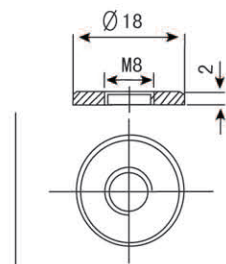
Terminal T1-T8



Terminal F16



Terminal F17



Terminal F18